

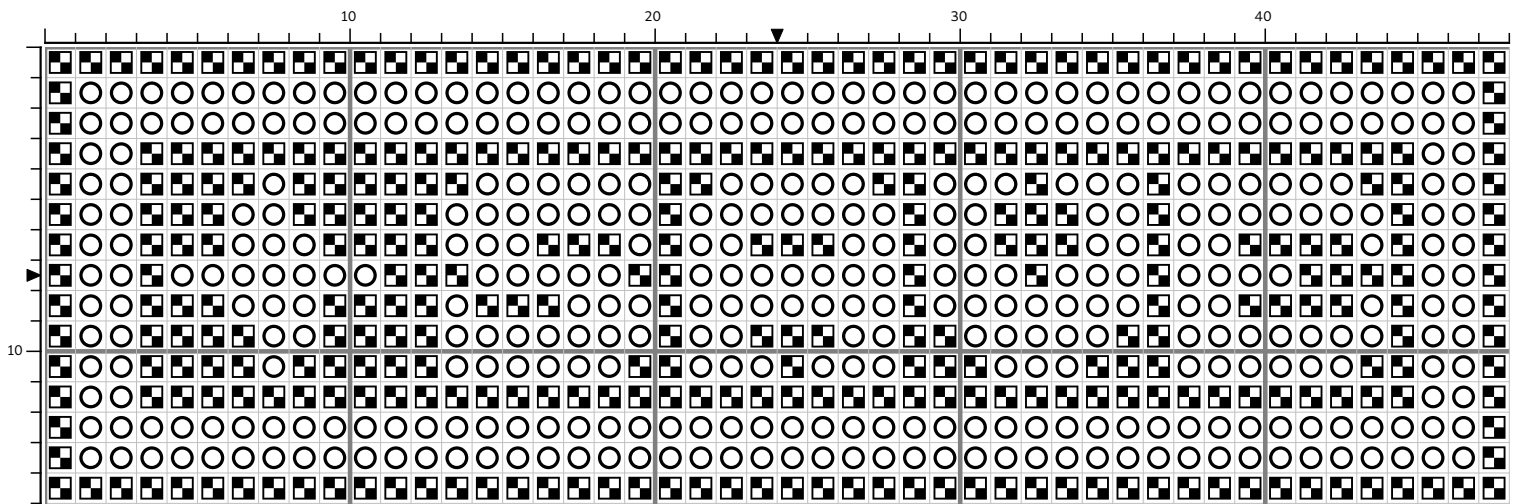
[Undertale] SAVE button



Created by copper-skulls. Made for personal use, based off the buttons in Undertale.

Pattern Size: 48 x 15
Flosses from the DMC range.

[Undertale] SAVE button



[Undertale] SAVE button

DMC Flosses

Symbol	Name	Strands	Description	Stitches	Length(m)	Skeins (8m)
■	310	2 / 2	Black	331	2	1 (0.04)
○	B5200	2 / 2	Snow White	389	2.35	1 (0.05)

Pattern made to work with any two colors: the colors here are just to have a nice contrast. :) Can look really nice with a light metallic + dark background color, if you want to wrangle some shiny thread. Could also probably look really cute with variegated floss against a contrast color. Have fun!

If you find out your contrast isn't high enough, this pattern takes very well to just backstitching in a dark thread along the edges of the letters.