

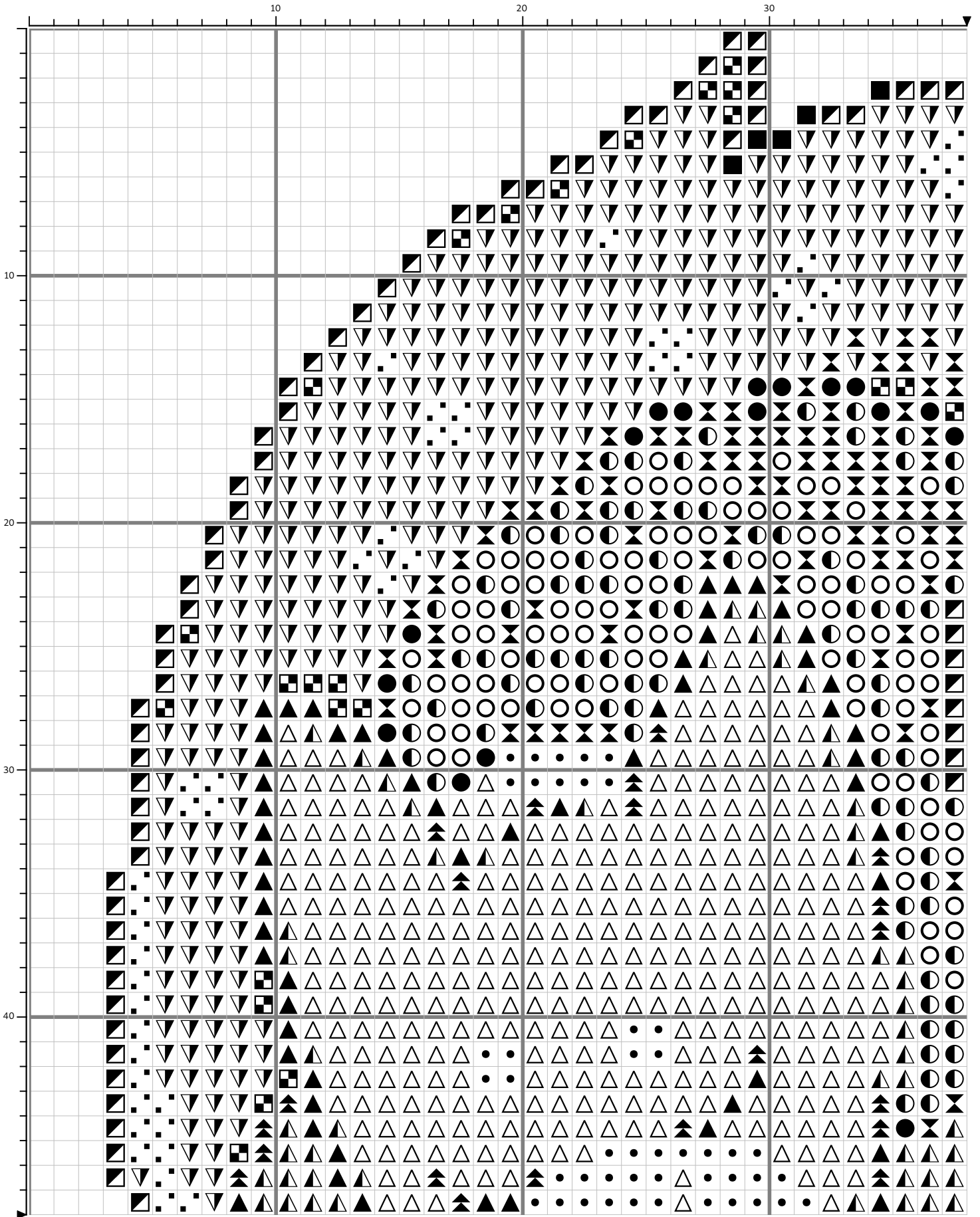
## Together (kufiya variant)



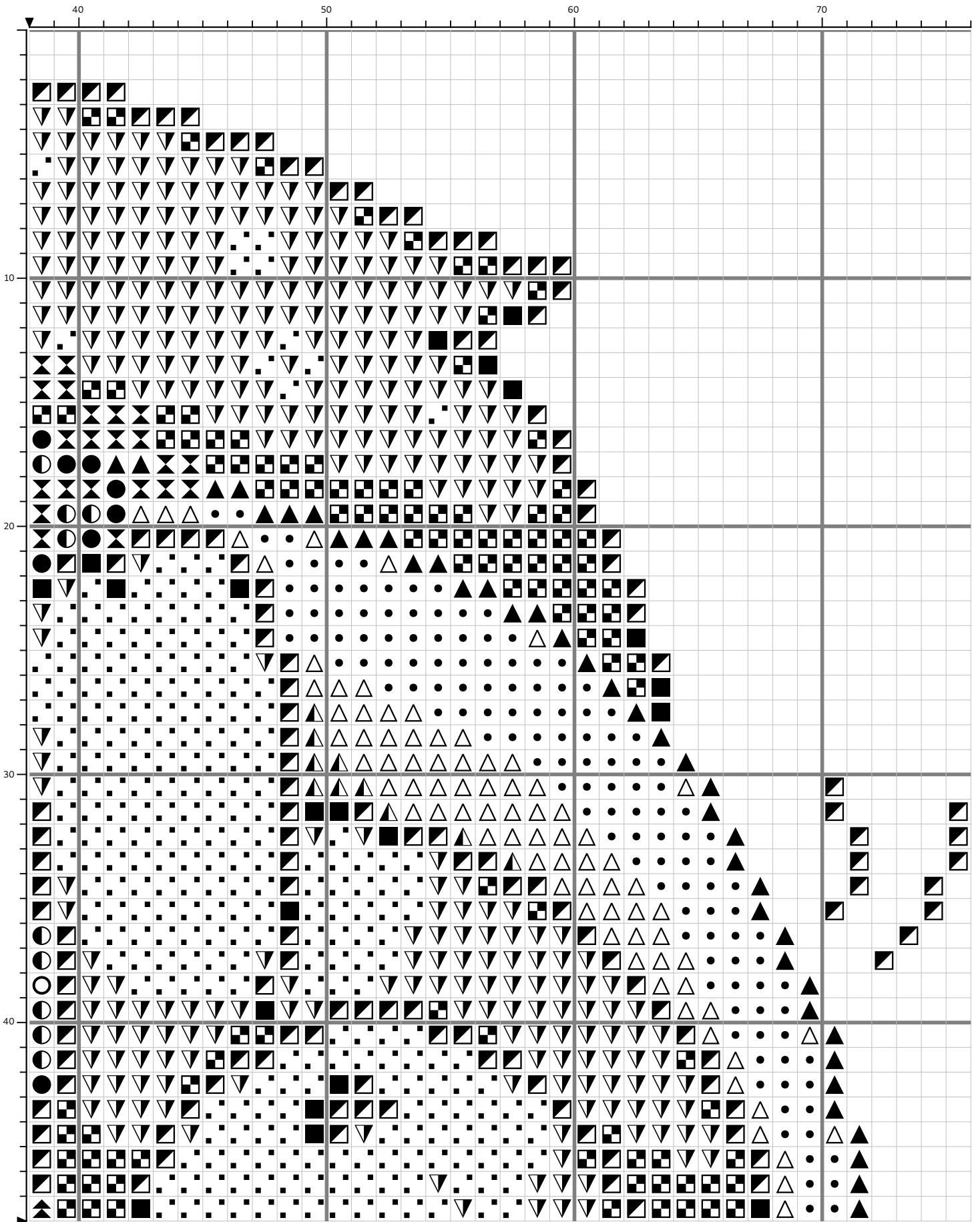
Created by copper-skulls. Free to use. Created for the crossstitchforgaza bundle.

Pattern Size: 76 x 96  
Flosses from the DMC range.

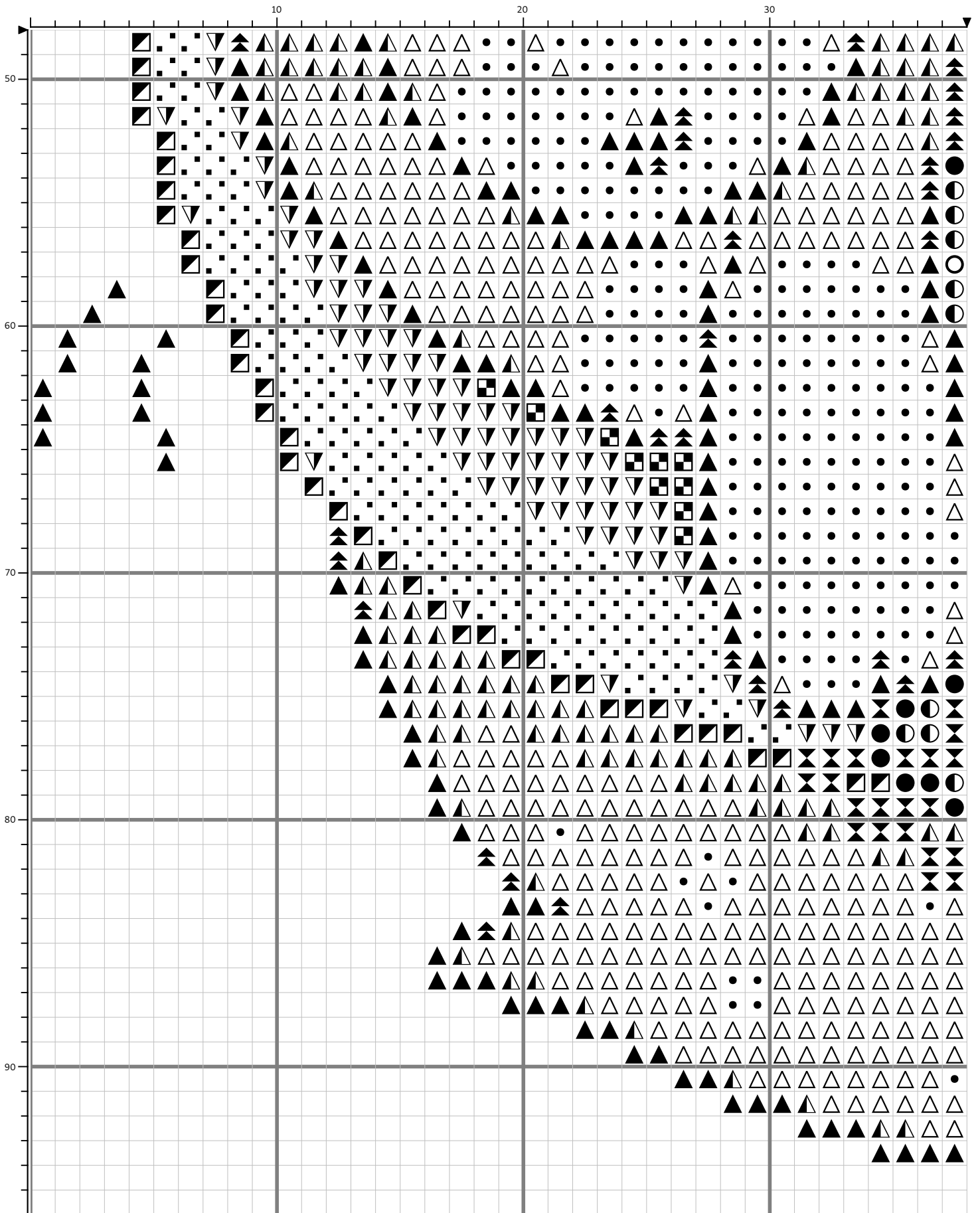
# Together (kufiya variant)



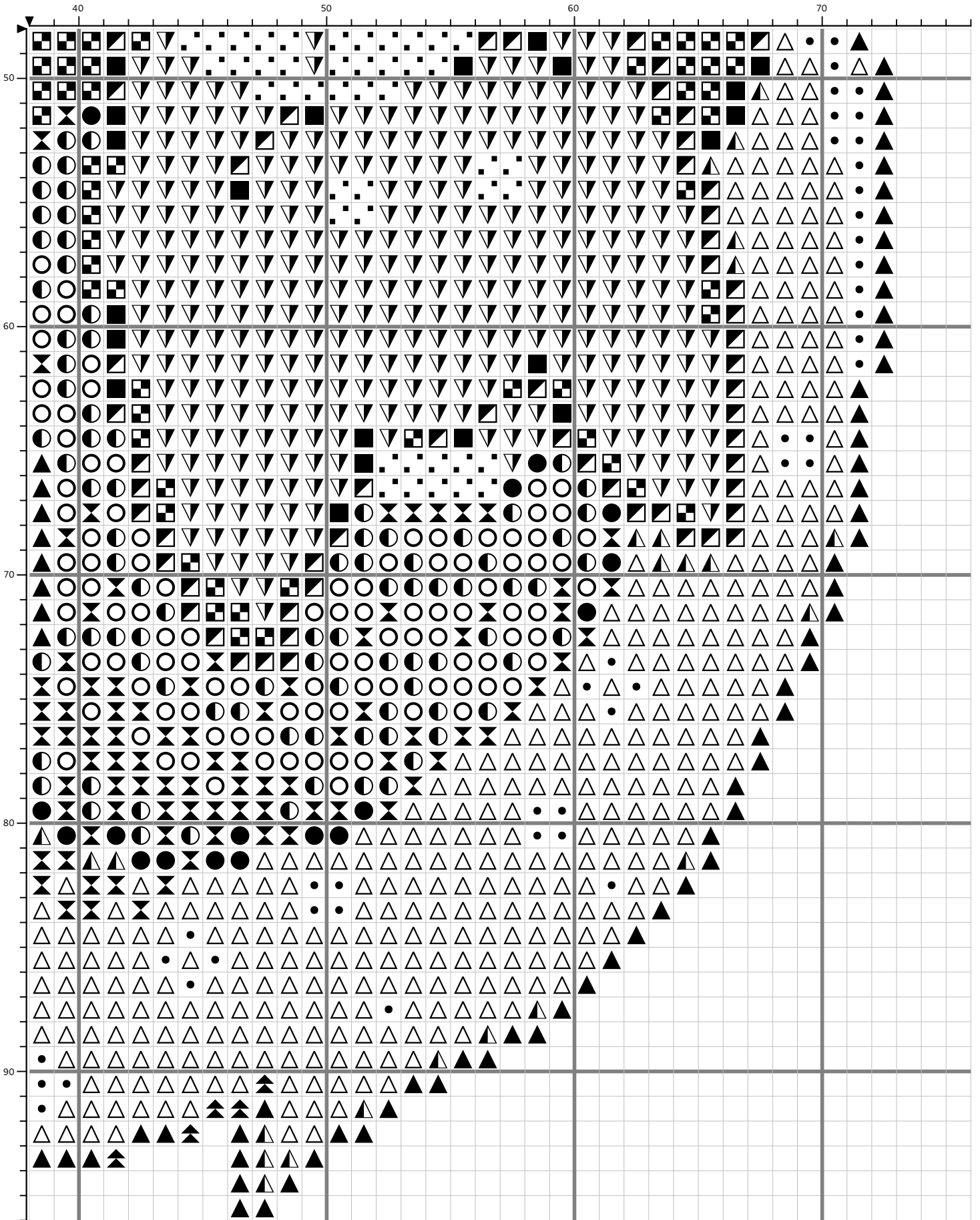
# Together (kufiya variant)



# Together (kufiya variant)



# Together (kufiya variant)



## Together (kufiya variant)

### DMC Flosses

Symbol	Name	Strands	Description	Stitches	Length(m)	Skeins (8m)
■	310	2 / 2	Black	47	0.28	1 (0.01)
●	451	2 / 2	Shell Gray Dark	196	1.18	1 (0.02)
○	453	2 / 2	Shell Gray Light	210	1.27	1 (0.03)
■	517	2 / 2	Wedgewood Dark	195	1.18	1 (0.02)
▽	597	2 / 2	Turquoise	1153	6.96	1 (0.14)
▲	720	2 / 2	Orange Spice Dark	196	1.18	1 (0.02)
•	745	2 / 2	Yellow Pale Light	485	2.93	1 (0.06)
■	820	2 / 2	Royal Blue Very Dark	303	1.83	1 (0.04)
⊗	938	2 / 2	Coffee Brown Ult Dk	220	1.33	1 (0.03)
●	3371	2 / 2	Black Brown	50	0.3	1 (0.01)
▪	3761	2 / 2	Sky Blue Light	485	2.93	1 (0.06)
▲	3777	2 / 2	Terra Cotta Vy Dk	294	1.77	1 (0.04)
△	3853	2 / 2	Autumn Gold Dk	1153	6.96	1 (0.14)
▲	3857	2 / 2	Rosewood Dark	57	0.34	1 (0.01)

Please take listed floss colors with a grain of salt - I do not have ready access to DMC floss and thus cannot test-stitch it. If your gut is telling you a different color, go with your gut.

Thanks for taking interest in my pattern!